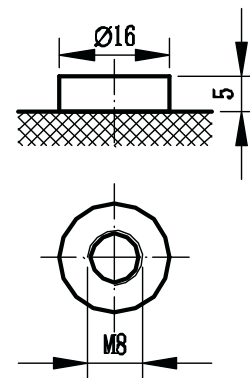
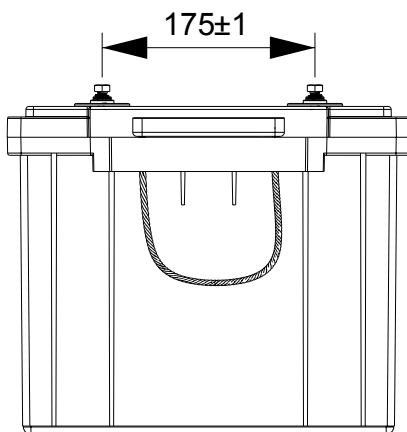
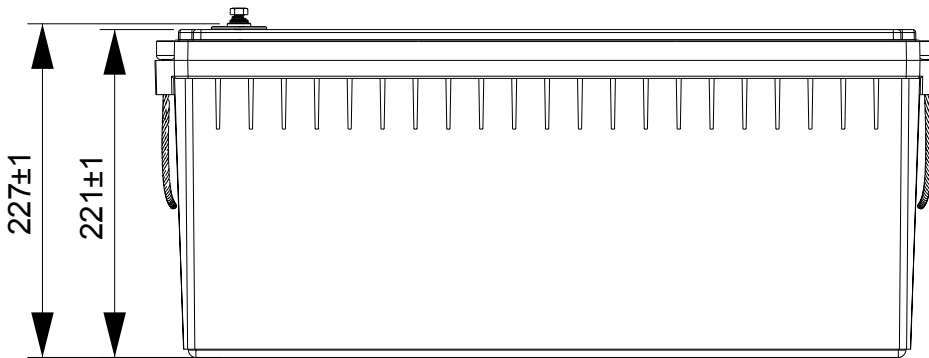
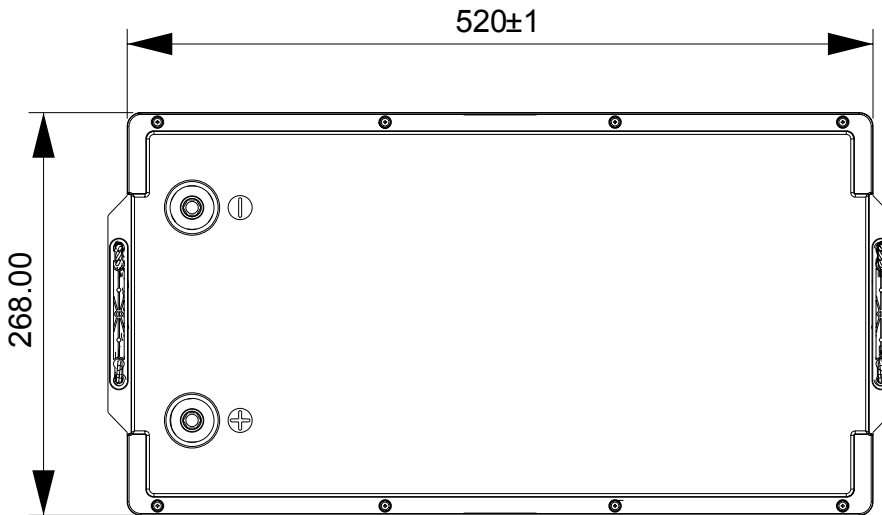


HUB LiON

TECHNICAL DRAWING




LITHIUM
ION BATTERY

HUB-12.8V-300-LFP-8D

BENEFITS AND ADVANTAGES

Start at the Core

- High Reliability
- Fast and Efficient charge/discharge cycles
- Deep Discharge capability
- Fully Recycle capability
- Light weight
- Environmentally friendly
- UL Approved Cells
- Safety UN38.3 approved
- UN3480, CLASS 9

www.hubpower.ca

4238 Lozells Ave #114 Burnaby, BC V5A 0C4

Phone: (604) 420-7737

Email: sales@hubpower.ca

ELECTRICAL SPECIFICATIONS

Nominal Voltage	12.8V
Amp Hour Capacity	300AH
Reserve Capacity @ 25A	720 min
Energy Density	3840Wh
Resistance - Milliohms	< 5
Efficiency - round trip	> 99.5%
Self Discharge per Month	< 3%
**Max 4 - series connections	12-48V
**Max 16 - parallel connections	300-4800AH

**DO NOT configure series and parallel connections simultaneously

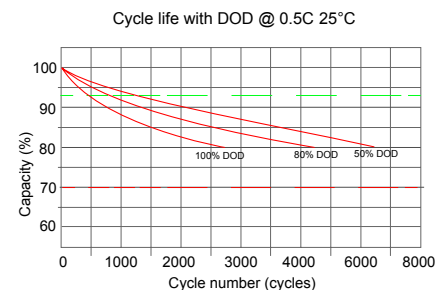
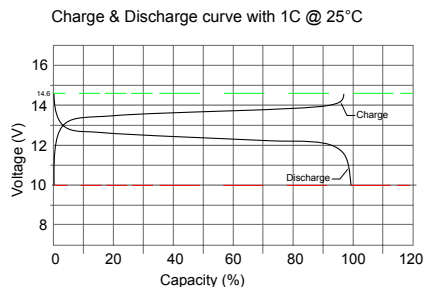
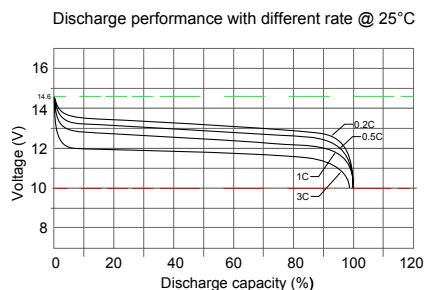
TEMPERATURE SPECIFICATIONS

Discharge Temperature	(-20 to 60C)
Charge Temperature	(-20 to 45C)
Storage Temperature	(-5 to 35C)
BMS High Temp Cut Off	80C
BMS Reconnect Temp	50C

CHARGE SPECIFICATIONS

Recommend Charge current	10A - 100A
Max Charge current	100A
Charge current (0 to -10C)	<0.1C
Charge current (-20 to -10C)	<0.05C
Recommended Charge voltage	14.2 - 14.6V
BMS High voltage disconnect	15.0V
BMS High voltage reconnect	14.6V
Balancing voltage	≥3.2V/cell

PERFORMANCE CHARACTERISTICS



DISCHARGE SPECIFICATIONS

Max Cont Discharge current	200A
Peak Discharge Current	900A
BMS Current Cut Off (10S)	>240A
BMS Current Cut Off (3S)	>300A
BMS Current Cut Off (1S)	>600A
BMS Low Voltage Cut Off	8.8V
BMS Low Reconnect Voltage	12V

MECHANICAL SPECIFICATIONS

Dimensions	20.47 x 10.55x 8.93in
L x W x H	520 x 268 x 227mm
Weight	66.18lbs (30KG)
Terminal Type	M8
Terminal Torque	90 in lbs (10NM)
Case Material	ABS
Case IP Rating	IP56
Cell Type - Chemistry	LiFePO4
Cell Type	Prismatic

HEATING CIRCUIT

Operating Range	(-20 to 5C)
Heating Circuit Engages at	≤ 0C
Heating Circuit Disengages at	+5C

SAFETY TESTED

Safety Ratings	CB / CE UN38.3 @ cell UL1973 @ cell
Shipping Classification	UN3480, CLASS 9